

Recycle-News-Haven

The NHSWRA Newsletter

NEW HAVEN RESIDENTS!

New Haven Solid Waste & Recycling Authority

presents:



Saturday, September 30, 9am - 1pm
At: 114 Farnham Ave., New Haven CT (on SCSU Campus)

WHAT YOU CAN BRING:

- DOCUMENTS** - (on-site document shredding - 3 file boxes max.)
- ELECTRONICS** - (TVs, cell phones, computers, monitors, stereos, printers and wires)
- MATTRESSES and BOX SPRINGS** - (in decent condition, no bugs or mold, dry)
- RECHARGEABLE BATTERIES**
- TEXTILES** - (clothing, shoes, belts, hats, handbags) (dry and in plastic bags)

WHAT YOU CAN LEARN:

- CURBSIDE RECYCLING** - What's in/What's out
- HOUSEHOLD HAZARDOUS WASTE** - Where and how to dispose of it
- PAINT** - Where and how to dispose of it
- WOOD** - Sustainability options

Our Partners:



For further information: Contact 203.691.5374 (office) or info@nhswra.com



Some photos taken of **Hometown Recycling Day 2021**, at the same location as this year's event.



Shredding on-site



Mattress drop-off



Information tent

Feature Life of Materials

What happens to the items that you bring to Hometown Recycling Day?

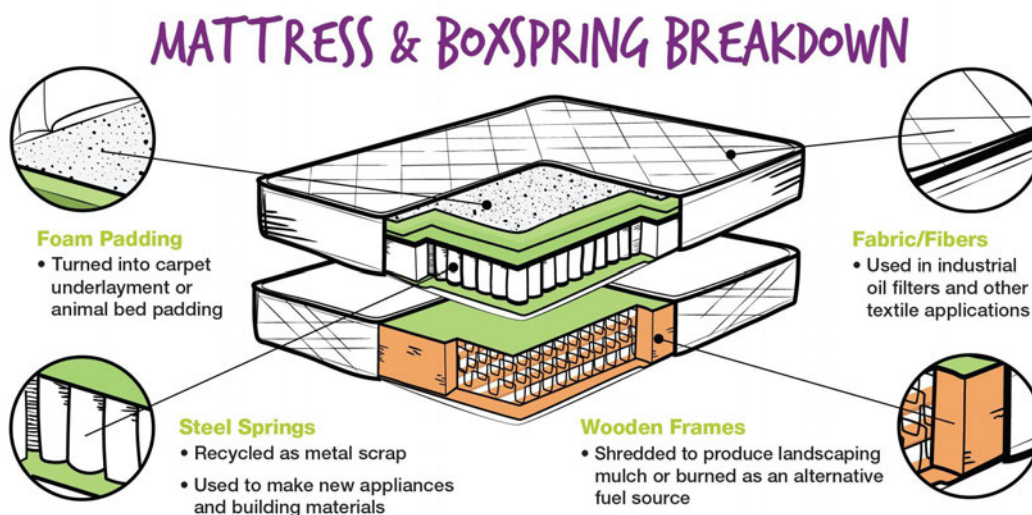
Clothing – (otherwise known as Textiles) represents 6% of the waste stream. In New Haven, only a small portion is actually upcycled or recycled, so there is a lot of potential. Our new partner, **Helpsy**, upcycles and recycles 95% of the clothing it processes. It is important to note that items containing mildew should not be placed in the bins, as this material is not recyclable. However, you can do your part in keeping some of these items from landfills. If you suspect your clothing has mildew, in some

cases the process can be reversed by simply washing right away and drying thoroughly. Do not store clothing in dark, unventilated areas (such as plastic bags).

So where does your unwanted clothing go after it reaches our bins at the Transfer Station, or at **Hometown Recycling Day**? Helpsy reuses or recycles 95% of the items they collect; 75% is reusable, and 20% is recyclable. Breaking things down further, there are three categories of used clothing. Helpsy actually runs an online store for “upcycled” used clothing (<https://helpsy.com/>); it is quite impressive! Some items are delivered to used clothing markets around the globe. With the advent of “fast fashion” (the trend toward short shelf-life and inexpensively made apparel), there has been a glut of material in the recycling market but that trend has been reversing, with many consumers looking for more sustainable solutions when they buy.

The remaining 20% of collected material goes into making of rags, furniture 'stuffing' and insulation.

Mattresses and Box Springs – **The Mattresses Recycling Council (MRC)** recycles mattresses and box springs very efficiently. The MRC breaks down the items into their component materials. The illustration below provides a great description of the process.



Electronics - E-waste recycling is carried out by our Partner, **Take2 Recycling**. They focus on the electronic components, and the elements contained therein. So you can imagine removing those components is a laborious process consisting of separating plastics from metals and internal circuitry.

Specific recycling processes vary depending on the materials being recycled and the technologies used, but there are some common steps. For example, at the recycling facility, workers separate iron and steel from the waste stream on a conveyor belt with a powerful overhead magnet that lifts off the iron and steel so it can be prepared for resale as recycled steel. Further mechanical processing separates aluminum, copper, lead, cadmium and mercury, and even gold.

The remaining stream is mostly plastic. Often, water separation technology is then used to separate glass from plastics. The final step is locating and extracting any remaining metal from the plastics to further filter the material stream. The separated materials are prepared for sale as usable raw materials for the production of new electronics or other products.

Because of the toxicity of some of the compounds in E-waste, recycling it properly is mandatory in Connecticut. Still, as much as 75% of qualifying material ends up in land-fills!

*As you can see, all of our select group of recycling vendors go over and above to capture and recycle materials found in the items that you will be bringing to **Hometown Recycling Day on September 30!***

Milestones

We are very sad to announce that Chris Kling, owner of New England Reuse in North Haven, has recently passed away. Chris was a long-standing force within the wood recycling community in the northeast, and his knowledge, passion and kindness will be missed.

NOTICE!

The New Haven Transfer Station will be closed on Monday, October 9, 2023. The administrative offices of the New Haven Solid Waste & Recycling Authority at 14 Trumbull Street will also be closed on that day.

Calendar of Events:

Hometown Recycling Day – September 30, 2023

NHSWRA and Southern Connecticut State University are co-sponsors of this major annual recycling event. (see articles above)

City of New Haven meeting schedule:

<https://newhaven-ct.legistar.com/Calendar.aspx>

New Haven Parks and Public Works info:

A Message from Parks and Public Works Resident Services:

The Parks & Public Works office located at 34 Middletown Ave will be closed on Monday, September 4, 2023. Please note that all trash and recycling pick-up will be delayed one day that week (9/4 – 9/9/2023).

As the season begins to change, please remember to place your yard waste outside on your normal trash & recycling day. Yard waste **MUST** be in brown bags and cannot weigh more than 50 lbs. **GRASS CLIPPINGS, ROCKS, AND DIRT** should not be placed in yard waste bags. Branches cannot be longer than 4 ft long and **MUST** be bound.

Please use these last few weeks of warmth to properly clean your trash and recycling totes. You can use a disinfectant, all-purpose cleaner, or dish soap to saturate both the inside and outside of the tote. Adding a bit of baking soda can help get rid of odors! We cannot replace totes due to an odor, so we encourage cleaning them regularly.

THERE WILL BE NO BULK PICK-UP IN SEPTEMBER. Residents can take items to the Transfer Station. New Haven residents with a valid CT state driver's license, or ID can stop by our office at 34 Middletown Ave Monday-Friday 7 am - 4 pm to pick up free vouchers to be used at the Transfer Station. Vouchers cover yard waste (such as branches, brush, and leaves) and residential waste such as electronics, bulky waste, and furniture - This includes items around your house (think: garage, attic, storage room) that are not otherwise recyclable at the transfer station.

VOUCHERS DO NOT COVER DEMOLITION AND/OR CONSTRUCTION, STUMPS, OR BRANCHES LARGER THAN 6 INCHES AROUND AND WILL RESULT IN A FEE FOR THE RESIDENT. AS NOTED PREVIOUSLY GRASS CLIPPINGS, MULCH, AND DIRT ARE NOT ACCEPTED AT THE TRANSFER STATION!

Did you know that See Click Fix also sends alerts? If you haven't reported a concern via the app, you can still sign up to receive alerts. You can create multiple points of interest and register to receive notifications for that area so you can get street sweeping notices where you live and where you work. We also send out notices to remind you that trash will be delayed for the holiday. [Please visit https://seeclickfix.com/new-haven](https://seeclickfix.com/new-haven) to sign up!

Links:

New Haven Public Works-

<https://www.newhavenct.gov/gov/depts/pw/>

Public Works paving schedule-

<https://www.newhavenct.gov/home/showpublisheddocument/15028/637903861608081376>

See Click Fix-

<https://seeclickfix.com/new-haven>

NHSWRA contact info and link:



14 Trumbull Street, Suite 102

New Haven, CT 06511

Office: 203.691.5374

Fax: 203.691.5990

www.nhswra.com

info@nhswra.com

Recycle-News-Haven is a copyrighted publication
of the New Haven Solid Waste & Recycling Authority.
All Rights Reserved