



## Feature **Transfer Station Tips**

*How to maximize your time and minimize your expenditures on your next visit...*

As you arrive at the New Haven Transfer Station, you might notice an attendant at the entrance. He is there to inform you and help you make the most of your visit. But there are things of which you should be aware that will help you organize your trip before you even get to the Transfer Station. Here are some examples:

As you may already know, single-stream recycling, household garbage (except for kitchen garbage), bulky items (furniture, appliances, etc.), covered electronics, metal, tires, mattresses/box springs, textiles (clothing, shoes and accessories) and yard waste are accepted from residents at the Residential Drop-off from 9 a.m. to noon, Monday through Friday. However, not all of these items require coupons\* in order to be accepted. In some cases, just a picture I.D. with your New Haven address will suffice. Single-stream recycling, electronics, metal, mattresses/box springs and textiles fall into this category. So, if you want to conserve on your coupons, and you have more than one load of material, you might want to group your items accordingly, and arrange your cargo so that one trip contains all of the aforementioned. Then, of course, bring along the remaining items on your next trip. This way you use only one coupon instead of two.

**Savings: 1 coupon**

If your load contains items that have to go over the scale and be paid for (construction and demolition, etc.), try to place them on top (or towards the back of the vehicle if it is an SUV, wagon or pickup. This way you can go to the scale first and easily remove those items, and then return to the scale to “weigh out” with the items destined for the Residential Drop-off still remaining in your vehicle (so you don't have to pay for them). Once you have weighed out, you can proceed over to the residential side with your other items. Please be aware that if you have some items in your residential load that are supposed to go over the scale and you attempt to go to the Residential Drop-off first, you may be asked to go over the scale, and then return with your remaining items to the residential side.

**Savings: your energy and/or extra time and confusion**

If you have a residential load, think about grouping items by category, so you can move between drop-off sites without having to back-track. For example, here is the order in which items can be dropped off: (see map, below) First (which means load these into your vehicle last when preparing for your trip) single-stream and cardboard. Next stop: Electronics. Then group all of your household and bulky items together. Next: metal. Then tires (maximum per year – 4, with NO rims). Next: textiles.

(Of course, some items such as mattresses and box springs will have to be placed where they are safe to carry, so you may have to drop them out of sequence.) When there is a line at the Residential Drop-off, this 'grouping' by category will eliminate extra waiting time in line, and/or will make it easier to off-load your material without digging through it.

**Savings: Waiting time, frustration and sore muscles!**

Now there are specific situations where it would be more prudent to choose one course of action over another, and the gate attendant will be happy to provide you with the options from which to choose.

Little things you should know ahead of time (so you are not unpleasantly surprised):

>Kitchen and bathroom cabinets and fixtures must go over the scale

>Although yard-waste deposit is free for residents with coupons, tree roots, large stumps and oversized logs (bigger around than 6") have to be taken over the scale and paid for.

>As mentioned earlier, tires must have no rims.

>textiles must be in 30 gallon bags or smaller (30 gallons is a standard household garbage bag)

>Shredded paper is NOT recyclable (so don't include it with your single-stream recyclables).

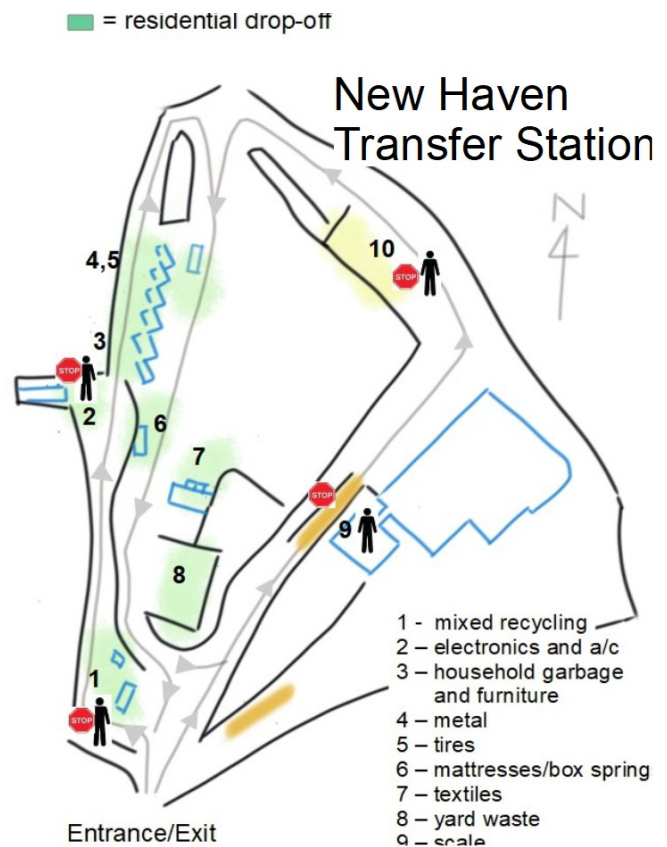
>We do not accept:

- grass clippings
- paint
- household hazardous waste (article below)
- stone, dirt, sand, concrete, bricks or cinder block

**Savings: Frustration and peace of mind!**

We at the Authority hope that these suggestions and knowledge of certain regulations will enhance your next visit to the New Haven Transfer Station!

**\*coupons- are vouchers made available to residents of New Haven by the Parks & Public Works Department, and can be obtained at 34 Middletown Avenue, New Haven, between the hours of 7:00 a.m. and 4:00 p.m., Monday through Friday.**



## **Feature Here's How:**

*You often hear about what to recycle, but do you know HOW to recycle?*

Quite a few items are recyclable, but only certain ones are allowed in your blue bin or blue toter at home. Let's start there. (Next issue we'll talk about what is recyclable *outside* the blue bin).

Determining what can be single-stream recycled (in your blue bin) and how comes down to what can and cannot be handled during the sorting process at the MRF (recycling processing center) First of all, do not bag anything or tie anything together. Bagging will cause your items to be peremptorily discarded at the center. As a matter of fact, none of the items that go in your blue bin even have to be grouped together or organized in any way (that gets done at the recycling facility).

You probably know that you should rinse your bottles, cans and containers, but did you know why? Since all of your items go in the blue bin together, it is very important that paper and cardboard do not get contaminated with food particles or even moisture. With that in mind, the rinse can be light, just enough to clear food particles. A quick swish and shake of a soda bottle should do just fine. Make sure all containers, bottles and cans are relatively dry (they don't have to be bone dry). Remember that caps by themselves are not recyclable so re-attach them. Lids on plastic drink containers are NOT recyclable, however. Nor are straws.

No need to waste your time (and finger nails) removing labels! That will be taken care of at the recycling facility. Also, once you rinse and shake out glass jars, you can put the metal tops back on. Same goes for lids on plastic containers.

Just a brief mention here – A quick rule of thumb: **any plastic, glass or metal that goes in the blue bin should be a food or beverage container.**

Some things that you might think should be recyclable in the blue bin but are NOT:

### Plastic

- plastic bags
- black plastic prepared food containers
- plastic plates, bowls and utensils (single-use cups ok)
- anything* made out of styrofoam!

### Paper

- paper cups
- ice-cream containers (milk cartons ok)
- shredded paper
- tissue paper
- paper towels (cardboard spools are ok)

**Metal**

- aerosol containers (food aerosol ok)
- small foil tops (aluminum foil in sheets is ok)
- paint cans
- pots and pans
- scrap metal
- drinking glasses
- ceramic or glass plates and mugs



[click here to play](#)



**Announcement**

**A Message from HazWaste Central**

*HazWaste Central opens in late May for the season!*

HazWaste Central (HWC) will open on Saturday, May 20, 2023. The collection center is open on Saturdays only, from 9 a.m. until noon, through October 28, 2023. The center is located at the Regional Water Authority, 90 Sargent Drive in New Haven. Pre-registration is required; please click [here](#) to complete the form. HWC will accept most types of **household hazardous waste** from home, garage, yard or garden that would otherwise be thrown away in regular trash. Click [here](#) for a complete list of items that can be brought to the permanent center. For more information check out [www.rwater.com/hazwaste](http://www.rwater.com/hazwaste) or call 203-401-2712.

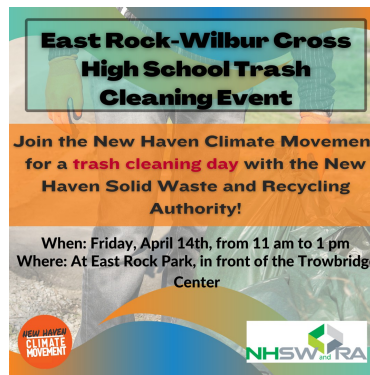


## Calendar of Events:

Earth Day Day, Saturday, April 22 <https://www.earthday.org/earth-day-2023/>

Rock-to-Rock Earth Day bike ride, Saturday, April 29 <https://www.rocktorock.org/>

The New Haven Solid Waste & Recycling Authority applauds the efforts of the New Haven Climate Movement and all the participants in their cleanup scheduled for April 14, in observance of Earth Day. The NHSWRA is thrilled to provide support services, free disposal and recycling of all that is collected from their endeavor.



## City of New Haven meeting schedule:

<https://newhaven-ct.legistar.com/Calendar.aspx>

## New Haven Parks and Public Works info:

### A Message from Parks and Public Works Resident Services:

**Happy Spring everyone! Leaf bag pick up reconvenes on April 3rd. Leaves should be placed in brown bags only and should not weigh more than 50-lbs. We will not pick up leaves packed in plastic yard bags.**

Rocks, dirt, branches, and trash should not be packed inside the brown bag. Branches cannot be longer than 3-ft long and must be bound together.

Once the branches are bound, it cannot be wider than a foot.

Grass clippings should not be included in the leaf bags. Grass clipping makes great mulch. Spread clippings thinly and allow them to completely dry and turn brown.

This process takes a week or two. It is generally safe and beneficial to use grass clippings as mulch for garden beds if the grass has been dried out and the lawn has not been treated with chemicals or contain any weed seeds. Grass clippings can enhance the soil quality and preserve moisture. Once they decompose, they become excellent plant food your plants need to thrive.

Please do not blow leaves and yard waste into the streets. Doing so, may subject you to a fine.

Just a reminder that weekly trash and recycling does not pick up bulky items such as broken furniture, small electronics, mattresses, tires and clothing. All these items must be brought to the Residential Drop-Off Center located at 260 Middletown Ave. You must have the residential vouchers to do so. Stop by our office located at 34 Middletown Ave to pick up vouchers. Our hours are Monday-Friday from 7am to 4 pm.

If you are interested in planning and coordinating a community clean-up, please call our office at (203)946-7700 for information.

The Parks and Public Works office located at 34 Middletown Ave will be closed Friday, April 7<sup>th</sup> in observance of Good Friday. The Residential Drop-Off Center located at 260 Middletown Ave. will not be open to residents. Please take note that trash and recycling will be picked up as scheduled on Friday, April 7<sup>th</sup>.

**Links:**

New Haven Public Works-

<https://www.newhavenct.gov/gov/depts/pw/>

Public Works paving schedule-

<https://www.newhavenct.gov/home/showpublisheddocument/15028/637903861608081376>

See Click Fix-

<https://seeclickfix.com/new-haven>



## NHSWRA contact info and link:



14 Trumbull Street, Suite 102

New Haven, CT 06511

Office: 203.691.5374

Fax: 203.691.5990

[www.nhswra.com](http://www.nhswra.com)

[info@nhswra.com](mailto:info@nhswra.com)

**Recycle-News-Haven** is a copyrighted publication  
of the New Haven Solid Waste & Recycling Authority.  
All Rights Reserved