

# Recycle-News-Haven

The NHSWRA Newsletter

**NOTICE:** The New Haven Transfer Station and Administrative Offices will be closed on Monday, February 20, 2023 in observance of Presidents' Day.

## Feature Touring the Transfer Station

*High School in the Community once again brings interested students to the New Haven Transfer Station for a look-see:*

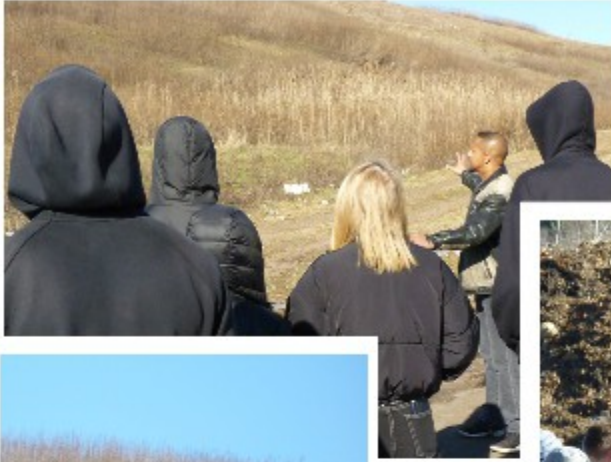


Students standing near the construction and demolition tip. MSW and Recycling tipping floors are in the background. 85,000 tons a year of MSW and 6,000 tons of recycling get sent to waste-to-energy plants from under the roof.

Pictured below is the construction and demolition area. The crane in the background moves, loads and compacts material in semi trailers to ship for processing.



A view of the MSW and Recycling tip in the background. To the right is the scale house building and operations office.



Executive Director Pierre Barbour explains the need to maintain the landfill, even though it has been retired for years.

special area for composting yard waste



Foreground: Flare apparatus for burning off methane gas produced by the landfill.  
Background: Resident deer



View of the Residential Drop-off area from below



Textile (clothing and accessories) drop-off area. 95% of items are re-used or recycled.



Single stream recycling area for New Haven residents



the "crew" from Highschool in the Community. Paul Jones, Science teacher and tour leader, is in the rear center. Michelle Martinelli from the NH Board of Education Facilities is on the left.

If your school or civic organization would like to tour the New Haven Transfer Station, please write to [info@nhswra.com](mailto:info@nhswra.com)

## **Feature** Why Recycle? How about “Why NOT?!”

*Recycling is not just a “win-win,” it is a “win-win-win-win-win-win-win-win,” as you shall soon see in this article.*

*Recycling saves natural resources, which are limited. A good case in point: aluminum cans. If aluminum were to be exclusively manufactured from virgin bauxite ore, there would only be enough for 20-25 years. However, most aluminum in use today has been recycled, and hence the supply will last for over 180 years. Refining bauxite into production grade aluminum takes 90% more energy (and as a result oil and or natural gas). Not only are valuable carbon-based fuels depleted, but resulting pollution from the process effects other limited natural resources such as the atmosphere and water.*



*Recycling reduces carbon footprint.* In most cases, it takes less energy to process recycling than to produce from raw materials. This means less damage to life sustaining resources including the atmosphere, the heat index and water.

*Recycling saves space.* There is a limited amount of space on the planet to deposit materials that haven't been recycled. If the U.S. stopped recycling there would be at least 80 million more tons a year to deal with. With fewer communities accepting waste in their 'backyards,' soon there would be simply no more acceptable room to accommodate all this material.

*Recycling amortizes capital investment and infrastructure.* The existing infrastructure took time and legislative efforts and investment capital to establish; if recycling sources (a/k/a you, the public) were to produce less, some of these links in the 'reverse supply chain' would cease to exist (supply and demand). Not to mention the many human-hours and resources already dedicated to messaging, which if discontinued, would take even more time to reinstate.

*Recycling sustains a thriving industry* which includes scientific research, engineering, collection organizations and facilities operators. According to the EPA's 2020 Recycling Economic Information (REI) Report, recycling and reuse activities in the United States alone accounted for 681,000 jobs; \$37.8 billion in wages; and, \$5.5 billion in tax revenues.

*Recycling is way under-served,* which simply means that as a practice and business there is much room for growth. The Nation only recycles approx. 20-30% of waste, when it is estimated that we can recycle up to 74% of waste with today's technology. (composting, with the most growth potential, could account for as much as 34% additional diversion from the waste stream.)

So there you have it – 6 reasons why you should keep putting cardboard, paper, plastic and glass bottles, and cans and various plastic containers etc. in your blue bin every week!

*And* it must also be remembered that recycling is the law in Connecticut, so there is that!

## **Dept** Careful! Disposing of the toxic and/or dangerous

*Something that is a potential threat in your home is no less of a threat when you dispose of it. Here is a partial guide to safe disposal....*

### *Fluorescent, LED and HID light bulbs*

Fluorescent light bulbs contain mercury, a dangerous heavy metal. LED bulbs contain lead and small amounts of arsenic. HID lights contain mercury and can contain radioactive catalysts. They may be disposed of at HazWaste Central, 90 Sargent Drive, New Haven during the late Spring, Summer and early Fall.



### *Lithium and lithium-ion batteries*

These batteries can leak lead toxic chemicals and contain highly-flammable compounds. They are considered highly recyclable and may be brought to HazWaste Central in season.

### *Electronics (yes, electronics!)*

Legacy CRT's contain lead and small amounts of precious metals

Flat screen monitors contain mercury and/or lead

Circuit boards contain silver and tin.

Computers contain lead, mercury, and zinc, which are hazardous but have good recycling value

all “covered” electronics can be dropped off for recycling at the New Haven Transfer Station, Monday through Saturday, 9 a.m. to 12:00 p.m.

### *Medication*

Medication, if not disposed of properly, ends up in the drainage and can enter the aquifer, contaminating drinking water. It has been traced in most water sources currently. Your local police station may have a repository for these items - call ahead to be sure. In New Haven, you may bring them to the central station at 1 Union Avenue, where there is a deposit box in the lobby.

### *Syringes*

Syringes can contain pathogens and illegal drugs, and can be a puncture threat. Do not throw loose needles into the garbage or curbside recycling. Dispose of used needles and other sharps in a sharps

container specifically designed for that purpose. The sealed container can then be placed in your curbside trash bin. Containers may be available from your physician or pharmacist and are sold at medical supply stores and online. There are also “mail-back” programs, some of which can be found online.

*Outdated bleach and surface cleaners*

Bleach and surface cleaners, which contain highly-toxic surfactants, are harmful to the environment and human health. Make sure the containers are properly sealed and bring to HazWaste Central in season.

*Insecticides and herbicides (weed killers)*

can be highly-toxic in small quantities.  
Bring to HazWaste Central in season

*Aerosols (non-food)*

There is a danger of explosion if these are compacted with regular trash. They may contain harmful compounds. Bring to HazWaste Central in season.

*Oil-based paint*

most often contains lead. Bring to HazWaste Central.

*Paint thinners and turpentine*

make sure containers are tightly sealed and bring to HazWaste Central.

*Car batteries*

contain large amounts of lead and sulfuric acid, and can explode under certain circumstances.

Most scrap metal dealers will accept these, and will pay you a small per pound fee.

Also, car parts stores will usually accept your old battery (and pay you a small amount) when you buy a new one.

*Propane canisters and cylinders*

There is a danger of explosion when left in trash – since trash is compacted when processed.

15-20 lb. propane canisters are accepted at Lowe's in New Haven, even with residual amounts of propane in the canister. Cylinders must be totally emptied, the tops removed, and then can be recycled as metal.

*Fire extinguishers*

There is a danger of explosion if left in regular trash.

Metal units must be totally empty of all compounds and the top removed and then can be recycled.

Plastic units must be totally emptied and can then be recycled.

Items misperceived as harmful-

*Halogen light bulbs* (do not contain any hazardous materials – place in regular trash)

*Smoke detectors* (contain radioactive Americium-241, but the amount is so small that it is not considered a threat anymore – place in regular trash)

regular *Alkaline batteries* (place in your regular trash)

*Glow-in-the-dark paint* (anything manufactured after 1960 contains no radioactive elements. Most everything prior to 1960, though it does contain small amounts of radium, is considered harmless unless ingested).

*Food-based items* that have propellant (*aerosol*) are ok in regular trash, but make sure they are empty and out of propellant.

## City of New Haven meeting schedule:

<https://newhaven-ct.legistar.com/Calendar.aspx>

## New Haven Parks and Public Works info:

### **A Message from Parks and Public Works Resident Services:**

Trash and recycling totes must be placed close to the curb the night before of your scheduled trash pick-up day. Totes cannot be placed on the curb earlier than 12-hours prior to the next scheduled collection and must be removed within 12-hours of collection.

Black trash bags that cannot fit inside the toter should be sealed and placed neatly on the curb. Boxes must be flattened and cut to fit inside the blue recycling toter. The refuse crew needs easy access to your trash and recycling totes. Please make sure that the treeline area where you place your totes is clear after each snow fall. Yard waste collection remains suspended through the winter season. Yard waste coupons are available for New Haven residents and may be obtained at the Parks and Public Works facility located 34 Middletown Ave. The Residential Drop-off station is located at 260 Middletown Ave. They are open Monday-Saturday from 9am-noon.

In observance of Presidents Day, our office at 34 Middletown Ave will be closed on Monday, February 20<sup>th</sup>. The Residential Drop-Station located at 260 Middletown Ave will also be closed. Please note that trash and recycling pick-up will be a day delayed.

As always, if you have any questions, give Parks and Public Works Resident Services a call at (203) 946-7700. We have been experiencing heavy call volume but if you leave your name and phone number with a question we will get back to you.

Remember you can always report Public Works issues at **See Click Fix** found on the New Haven City website (see “Links,” below).

**Links:**

New Haven Public Works-

<https://www.newhavenct.gov/gov/depts/pw/>

Public Works paving schedule-

<https://www.newhavenct.gov/home/showpublisheddocument/15028/637903861608081376>

See Click Fix-

<https://seeclickfix.com/new-haven>

**NHSWRA contact info and link:**



14 Trumbull Street, Suite 102

New Haven, CT 06511

Office: 203.691.5374

Fax: 203.691.5990

[www.nhswra.com](http://www.nhswra.com)

[info@nhswra.com](mailto:info@nhswra.com)

**Recycle-News-Haven** is a copyrighted publication  
of the New Haven Solid Waste & Recycling Authority.  
All Rights Reserved